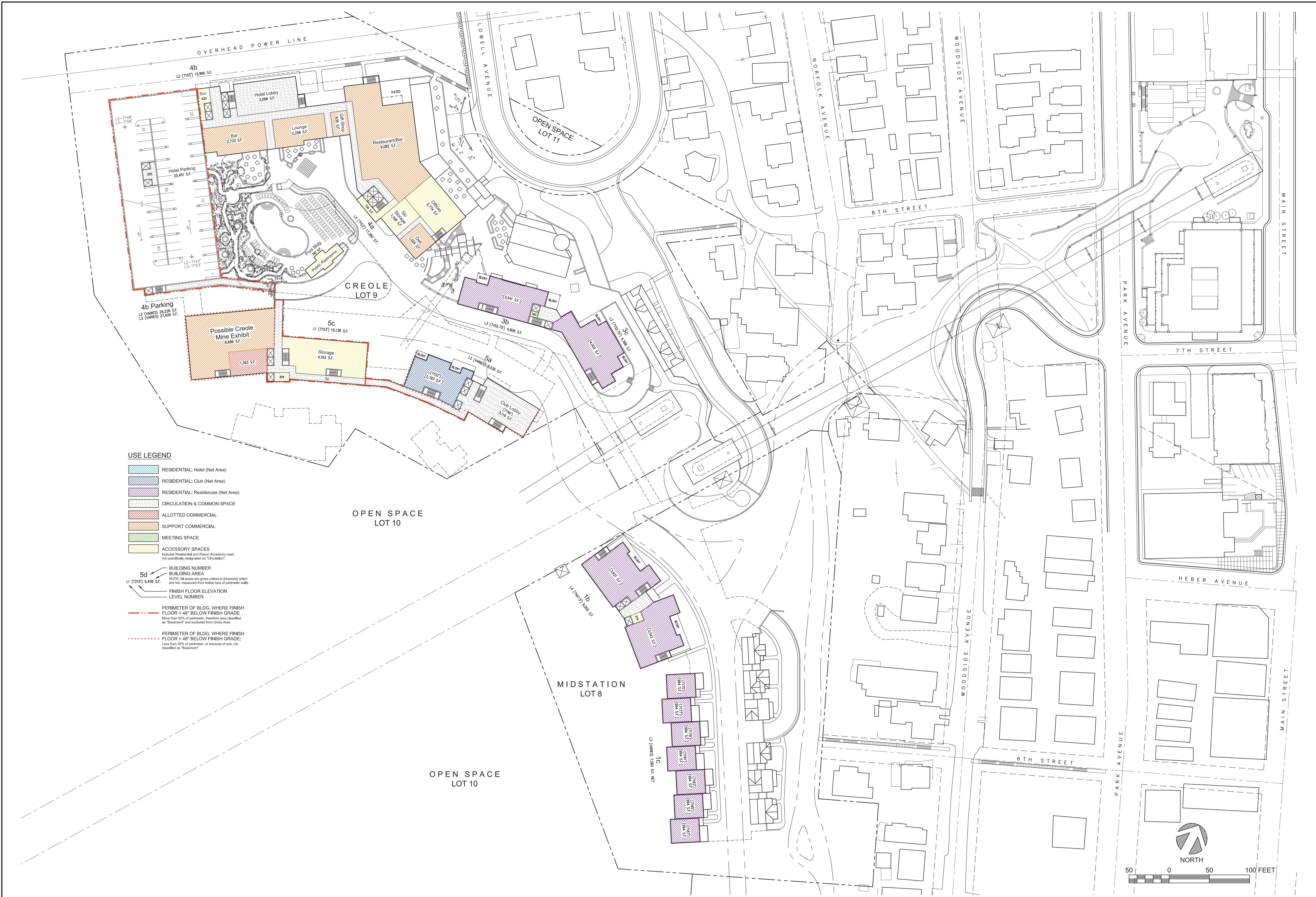




Level 5 Use Plan

Developed by
MPE, INC., PO Box 24229, Park City, UT 84060
eMail: info@treasureparkcity.com



USE LEGEND

- RESIDENTIAL: Hotel (Net Area)
- RESIDENTIAL: Club (Net Area)
- RESIDENTIAL: Residences (Net Area)
- CIRCULATION & COMMON SPACE
- ALLOTTED COMMERCIAL
- SUPPORT COMMERCIAL
- MEETING SPACE
- ACCESSORY SPACES
Includes Residential and Resort Accessory Uses not specifically designated as "Club/Resort".

- BUILDING NUMBER
- BUILDING AREA
NOTE: All areas are gross unless in brackets which are net, measured from inside face of perimeter walls.
- FINISH FLOOR ELEVATION
- LEVEL NUMBER

- PERIMETER OF BLDG. WHERE FINISH FLOOR > 48" BELOW FINISH GRADE
More than 50% of perimeter, therefore area classified as "Basement" and excluded from Gross Area
- PERIMETER OF BLDG. WHERE FINISH FLOOR > 48" BELOW FINISH GRADE:
Less than 50% of perimeter, or because of use, not classified as "Basement"

5d

L1 (7213) 5,458 S.F.

L2 (7143) 12,266 S.F.

L3 (7143) 12,266 S.F.

L4 (7157) 12,266 S.F.

L5 (7157) 12,266 S.F.

L6 (7157) 12,266 S.F.

L7 (7157) 12,266 S.F.

L8 (7157) 12,266 S.F.

L9 (7157) 12,266 S.F.

L10 (7157) 12,266 S.F.

L11 (7157) 12,266 S.F.

L12 (7157) 12,266 S.F.

L13 (7157) 12,266 S.F.

L14 (7157) 12,266 S.F.

L15 (7157) 12,266 S.F.

L16 (7157) 12,266 S.F.

L17 (7157) 12,266 S.F.

L18 (7157) 12,266 S.F.

L19 (7157) 12,266 S.F.

L20 (7157) 12,266 S.F.

L21 (7157) 12,266 S.F.

L22 (7157) 12,266 S.F.

L23 (7157) 12,266 S.F.

L24 (7157) 12,266 S.F.

L25 (7157) 12,266 S.F.

L26 (7157) 12,266 S.F.

L27 (7157) 12,266 S.F.

L28 (7157) 12,266 S.F.

L29 (7157) 12,266 S.F.

L30 (7157) 12,266 S.F.

L31 (7157) 12,266 S.F.

L32 (7157) 12,266 S.F.

L33 (7157) 12,266 S.F.

L34 (7157) 12,266 S.F.

L35 (7157) 12,266 S.F.