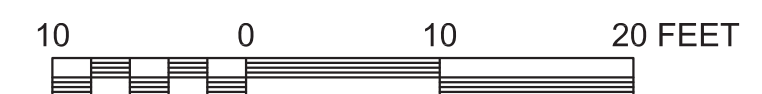




EAST WING - NORTH ELEVATION

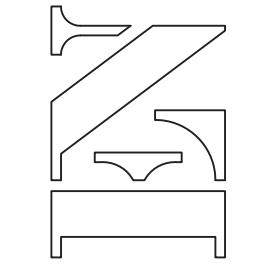


WEST WING - NORTH ELEVATION



REVISIONS:

ELDRIDGE & NICHOLSON
ARCHITECTS
220 SOUTH
SUITE 500
SALT LAKE CITY, UTAH 84101
(801) 363-4667



MPE
INCORPORATED

Building 5C Exterior Elevations

Developed by
MPE, INC., PO Box 2429, Park City, UT 84060
eMail: info@treasureparkcity.com



SHEET NUMBER

E.5C.1

6/12/2008